

NetworkExpert Student Manual

Platform Version 5.1
Windows Media Player Compatible

User Navigation & Interface Training

Let's take a minute to familiarize you with the interface. Please notice there are links on the left side of the page as well as tabs across the top of the interface. Each has its unique functions.



HOME TAB

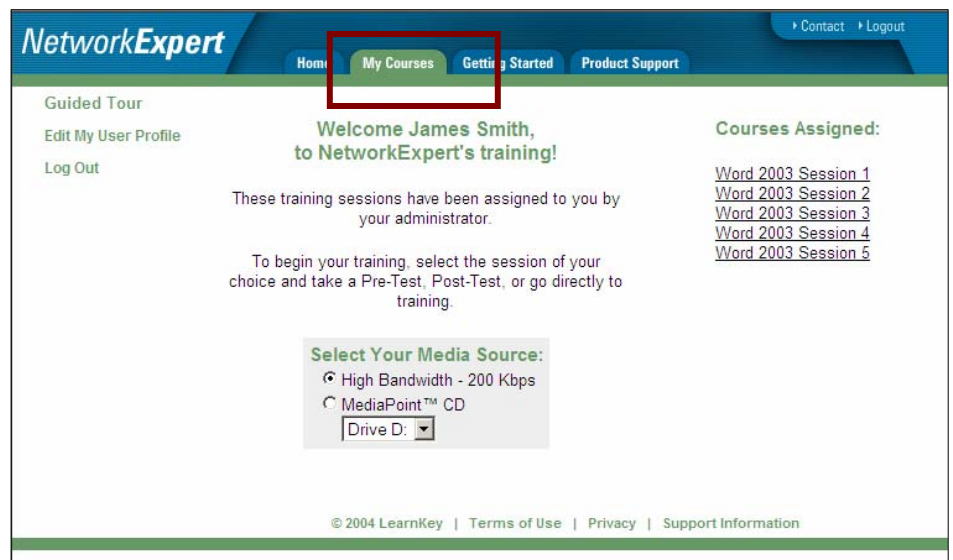
When you hit the home tab, at any time, you will be taken back to this home page.

GETTING STARTED TAB

This tab will take you to the steps for setting up your computer workstation. NetworkExpert requires that Internet Explorer, Windows Media Player 9 or higher and LearnKey plug-ins are loaded on your machine to ensure a successful training experience.

MY COURSES TAB

Once logged in, the My Courses Tab will direct you to a list of your assigned courses and allows you to select your next training session.



REGISTER NOW

This registration link is for users whose administrators have already set up their workstations. This allows you to “register” in NetworkExpert, by adding your name, User Name, Password, Email address without needing to go through the getting started pages. You will also be assigned the guided tour course during this process.



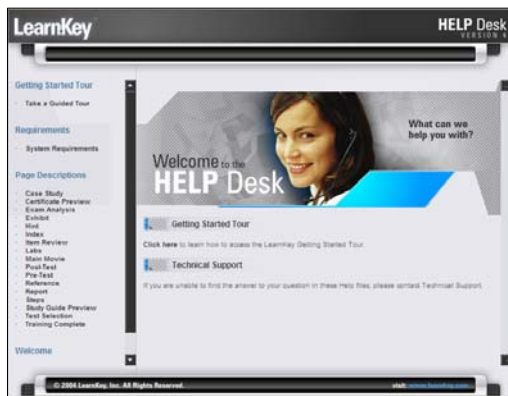
USER LOGIN

This is where you enter your user name and password that you just registered in the system. Use this quick login each time you enter the system for training.

PRODUCT SUPPORT

CONTACT INFORMATION

If you need technical assistance and you cannot solve the problem on your own, use the Support Information Link on your Product Support Tab to view your administrators contact information.



HELP DESK

During the course of training there may be occasions that some product or technical support is required. The Product Support Tab will give you access to the online HELP Desk as well as contact information for your support team.

Shadowbox Learning Services
1.888.808.7919
www.shadowbox.ca